

PROJECT DATA

MT. CLEMENS GENERAL HOSPITAL CENTRAL ENERGY PLANT

MT. CLEMENS, MI

Client

Mt. Clemens General Hospital
1000 Harrington
Mt. Clemens, MI 48034
Jerry VanCouwenberghe
586.466.8075

Architect

Harley Ellis
26913 Northwestern Hwy
Suite 200
Southfield, MI 48034
Eric Essique
248.262.1500

Size

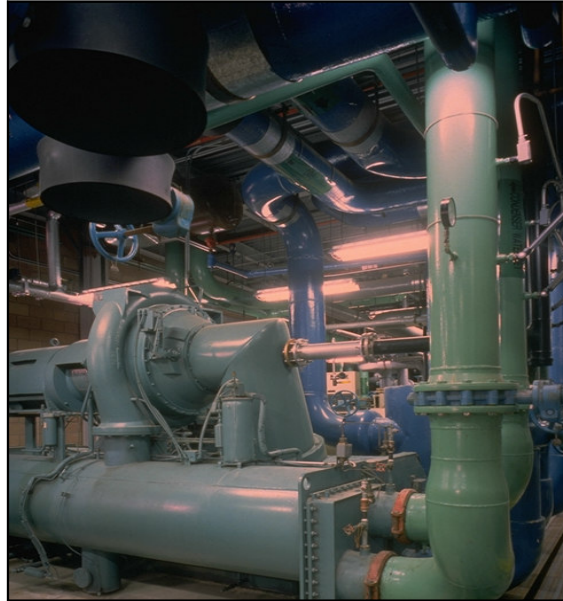
2,000 sf

Cost

\$380,000

Date Completed

1994



Utilizing a Partnering Charter, JM Olson provided construction services for a new 2,000 sf Central Energy Plant. The plant, made of a steel shell, houses all electrical, heating and cooling services for the entire hospital. Our project challenge was working around the existing mechanical and electrical systems while installing new equipment.