

PROJECT DATA

DUPAGE COUNTY MAINTENANCE FACILITY

WINFIELD, IL

Client

DuPage County
Owner County of Dupage, Illinois
Procurement Division
421 North County Farm Rd.
Room 3-400
Wheaton, IL 60187-3978
Peter Costa
630.407.6200

Architect

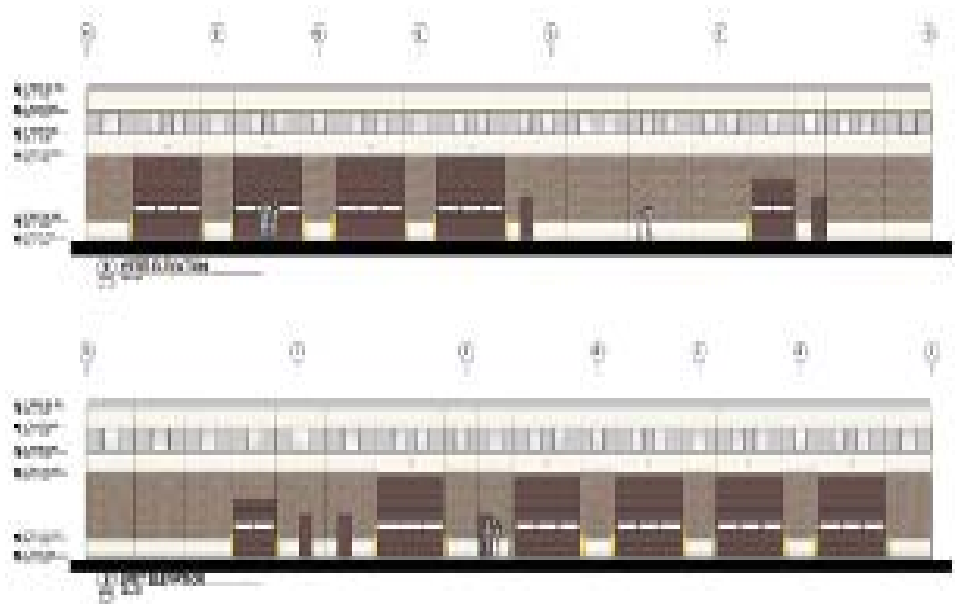
Harley Ellis
26913 Northwestern Hwy.
Suite 200
Southfield, MI 48034
Matt Bohde
248.262.1500

Size

24,000 sf

Cost

\$4,000,000



JM Olson Corporation provided design/build services for the Dupage County Department of Transportation. This is a 24,000 sf heavy truck maintenance facility designed to house & maintain the counties fleet of heavy trucks. Amenities include parallelogram lifts, 2 post lifts, a bi-directional overhead crane rail system, hydraulic lifting systems, top of the line garage equipment, in ground heating system, a metal shop, tool crib, storage facilities, locker rooms, and offices.

JMOC introduced a concept differing from the original bid concept resulting in a substantial savings to DuPage County.

