

GENERAL SERVICES ADMINISTRATION CARGO INSPECTION FACILITY

DETROIT, MICHIGAN
LEED CERTIFIED

Client

General Services Administration
230 South Dearborn St.
Chicago, IL 60604
Dana Pionke
(312) 353-1490

Architect

Harley Ellis Architects
26913 Northwestern Hwy., Suite 200
Southfield, MI 48034
Matt Bohde
(248) 262-1500

Project Size

70,000 SF

Project Cost

\$22,000,000

Project Team

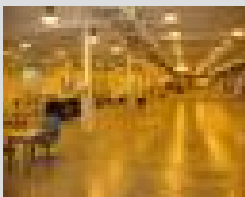
John Griffor, Project Manager
John Giannotta, Superintendent
Gary Szor, Superintendent
Andrew Holewinski, Project Engineer
Amy Thomas, Project Coordinator
Vicky Patrick, Project Accountant

Date Completed

November 2007

Delivery Method

Construction Management



Located at the foot of America's #1 international border crossing, the Ambassador Bridge, the General Services Administration Cargo Inspection Facility services the commerce between Detroit, Michigan (USA) and Windsor, Ontario (Canada). Working with a facility that services over 7,000 trucks on any given day, JM Olson Corporation was challenged to successfully deliver this 70,000 SF project without disrupting Customs and Border Patrol operations and the flow of international trade traffic and associated commerce.

This Construction Management project included the construction of a single level 28,000 SF broker building which houses brokers for the various trucking companies, a 32,000 SF renovation to the existing inspection facility, and a 10,000 SF addition to expand and lengthen the loading dock area. Rework of existing site concrete was also completed to facilitate the construction of the new VACIS building, and other new border security features installed to assist in expediting the trade traffic.

Due to the unique location of the project, and the services that the Cargo Inspection Facility provides, construction was completed through a phasing plan tailored specifically to needs of the project. Considering that the border's operations run on a 24/7/365 schedule, the JM Olson team worked around the clock to ensure the objectives of the project were met to everyone's satisfaction.

Phase I- VACIS Building and Sitework

The initial phase included the construction of the 7,000 SF VACIS building, and the installation of new underground utilities, including electrical, communication, and sewerage. A new concrete roadway was installed for the new traffic flow configuration, as well as post primary inspection booths and additional site lighting.

**GENERAL SERVICES ADMINISTRATION
CARGO INSPECTION FACILITY**
DETROIT, MICHIGAN
LEED CERTIFIED



RPM Project

This portion of construction occurred simultaneously to the back of Phase I and included the installation of new lane by lane RPM machines, and modifications to the existing Portal #2. The RPM project required concrete foundations, signage, structural steel framing, extensive electrical and communication work. Equipment terminations and power re-feeds also occurred during this time.

Phase II

Beginning as well during the tail end of Phase I, and running simultaneously, Phase II included the 28,000 SF broker building, a 32,000 SF renovation to the existing Cargo Inspection Facility, and the 10,000 SF expansion of the loading dock facilities. The renovation project included the various offices areas and command center, while the loading dock expansion doubled the facilities capabilities, taking the dock from eight bays to sixteen. This portion of the project was also extensively phased to keep operations running and traffic flowing at normal levels.